

THE FINEST HOMES, TRAVEL AND LIFESTYLE Vol 29 No 5

INTERNATIONAL PROPERTY

& Travel

FREE INSIDE
Asia Pacific's Best Property
Awards Supplement

CITY OF GOLD

Outstanding homes and hotels in Dubai

PLUS

Pristine London Developments

With compliments of



- Interiors • Art Exhibitions
- Watches • Jewellery • Superyachts

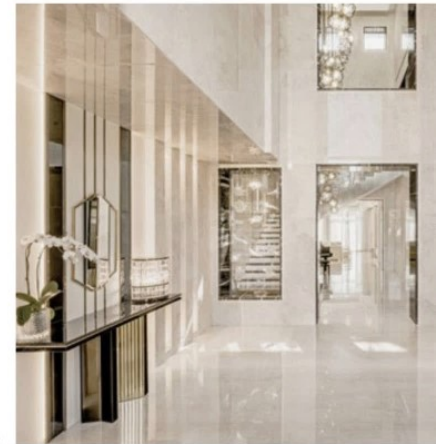
Extraordinary PROJECTS

With the glittering 2022-2023 Arabia Property Awards event scheduled for Thursday, 6th October 2022 at Habtoor Grand Resort, Dubai, we take a look back at some of our Dubai-based winners from 2021-2022.



XBD Collective

► www.xbdesign.com

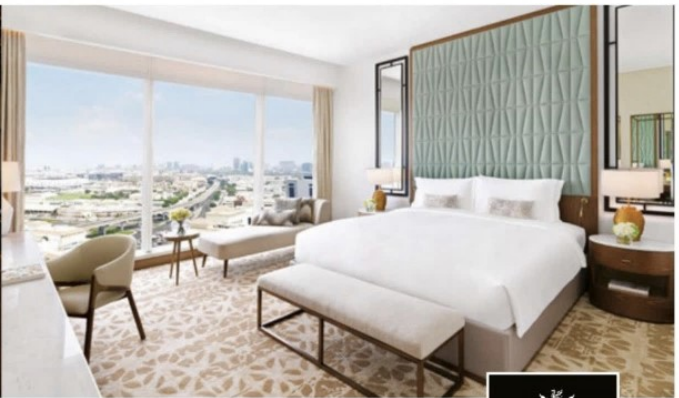


XBD COLLECTIVE A villa positioned in the exclusive area of District One, Dubai

This design features a tailor-made villa unique to the tastes of a family of four. The four-bedroom residence, with its an impeccably detailed interior scheme won many hearts almost immediately.

Large open spaces were created to host family and peers, whilst more understated family spaces were needed for privacy and comfort. The design consisted of rich materials and textures, specialist joinery,

high-end finishes and strategically placed decorative and indirect lighting to create ambience and heighten the sense of luxury. Upon entering the property, an impressive entranceway is covered in Crema Dolce marble, vertical gold accents and crystal elements. Eyes are further drawn to a black, St. Laurent marble window that features a custom-made, crystal chandelier design of molded glass leaves.



WA INTERNATIONAL Timeless interiors created by WA International

Sofitel Dubai's exterior is shaped as an immense Obelisk standing 51-storeys tall in the heart of Dubai. Impressive Pharaonic columns stand tall within the 18-metre high entrance lobby, beautifully carved with ancient Egyptian hieroglyphics. A nine-metre wide golden falcon sculpture takes centre stage over the reception desks. The falcon symbolises the Pharaonic God of the sky Horus representing immense power. Falcons are also the UAE's national bird and a potent symbol of the nation's strength and heritage.

The French restaurant's design elements include luxurious Egyptian motifs and bold

colours such as white, black and gold. You will also find fluted columns, plaster reliefs and bulbous light fittings.

The executive club offers an impressive 360 view of Dubai. The colours were kept light and fresh with touches of pale green. Mirrored columns with Art Deco palm leaf patterns were used to reflect the views throughout the space. Touches of French sophistication and contemporary ancient Egyptian accents can also be found throughout. All these interior elements blend seamlessly to create a truly spectacular design.



WA International

► www.wa-international.com